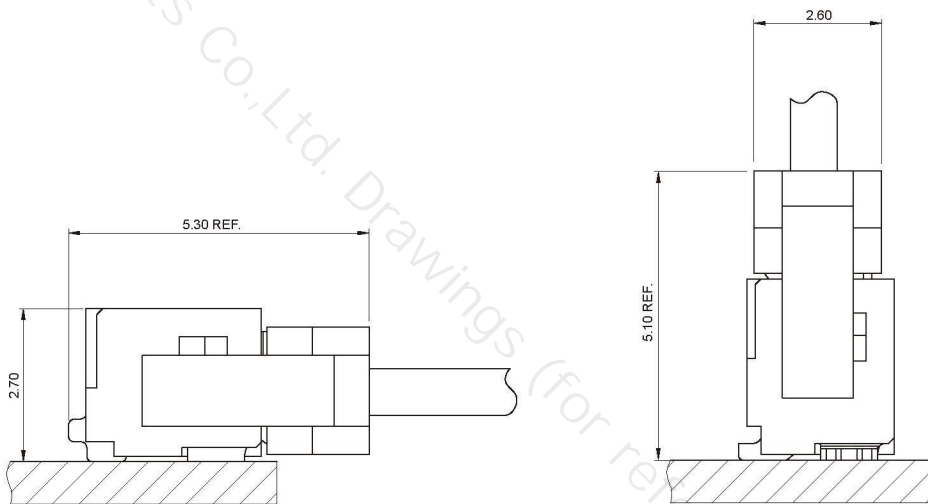


■ **Specifications**

- Contact resistance: $\leq 10\text{m}\Omega$
- Insulation resistance: $\geq 1000\text{M}\Omega$
- Rated voltage: 150V AC DC
- Rated current: 1.0A AC DC
- Withstand voltage: 800V AC/minute
- Temperature range: $-25^{\circ}\text{C} \sim +85^{\circ}\text{C}$

■ **Assembly Layout**



A12511 SERIES

1.25mm pitch wire to board connector

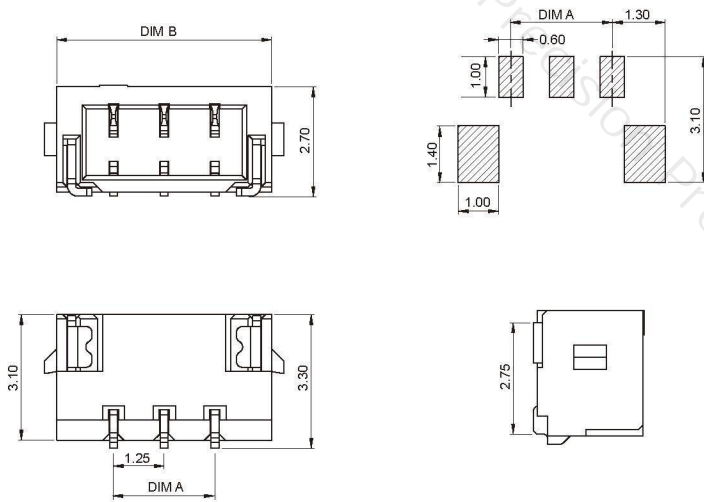
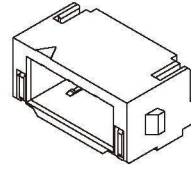
A12511AWR (1.25mm Pitch 90°Wafer SMT TYPE)

■ Reference Information:

Material: Pin: Phosphor Bronze/Tin-plated

Solder Tabs: Brass/Tin-plated

Wafer: LCP,UL94V-0



Ordering Information & Dimensions:

Circuit	Dimensions(mm)	
	A	B
02	1.25	4.05
03	2.50	5.30
04	3.75	6.55
05	5.00	7.80
06	6.25	9.05
07	7.50	10.30
08	8.75	11.55
09	10.00	12.80
10	11.25	14.05

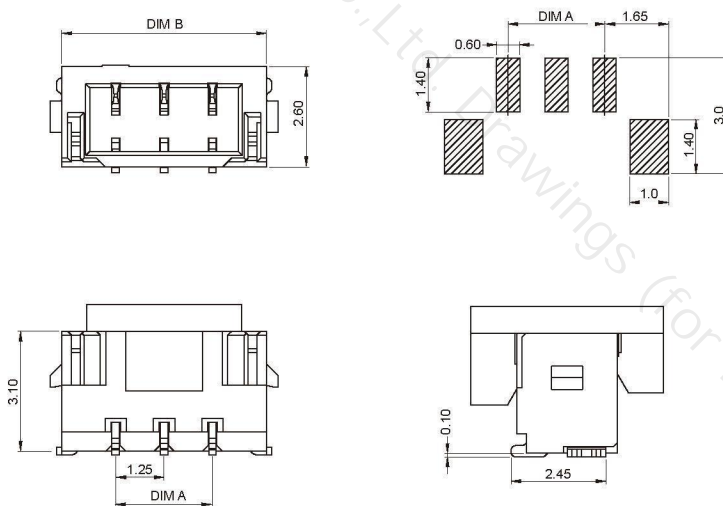
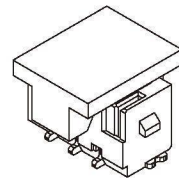
A12511AWV (1.25mm Pitch 180°Wafer SMT TYPE)

■ Reference Information:

Material: Pin: Phosphor Bronze/Tin-plated

Solder Tabs: Brass/Tin-plated

Wafer: LCP,UL94V-0



Ordering Information & Dimensions:

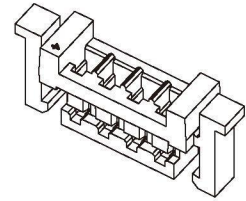
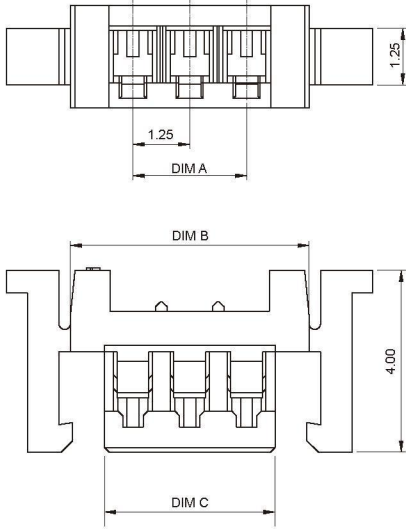
Circuit	Dimensions(mm)	
	A	B
02	1.25	4.05
03	2.50	5.30
04	3.75	6.55
05	5.00	7.80
06	6.25	9.05
07	7.50	10.30
08	8.75	11.55
09	10.00	12.80
10	11.25	14.05

A12511 SERIES

1.25mm pitch wire to board connector

A12511Y (1.25mm pitch Housing)

- Reference Information:
- Material: PA66, UL94V-0(2)
- Suitable A12511 series terminal
- Mates with A12511 series Wafer

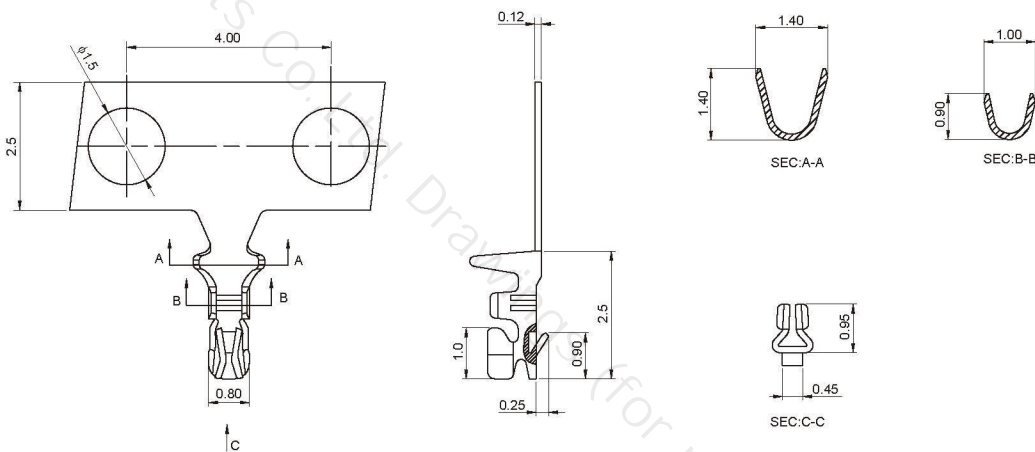


Ordering Information & Dimensions:

Circuit	Dimensions(mm)		
	A	B	C
02	1.25	4.00	2.50
03	2.50	5.25	3.75
04	3.75	6.50	5.00
05	5.00	7.75	6.25
06	6.25	9.00	7.50
07	7.50	10.25	8.75
08	8.75	11.50	10.00
09	10.00	12.75	11.25
10	11.25	14.00	12.50

A12511T (1.25mm pitch Terminal)

- Reference Information:
- Used in A12511 series Housing



Ordering Information & Dimensions:

Part No	Wire Range	Insulation O.D.	Material	Finish	Qty/Reel
A12511T	AWG #28~#30	1.00mm(max)	Phosphor bronze	Tin-plated	/

WIRE TO BOARD

BOARD TO BOARD

WIRE TO WIRE

FPC SERIES

THRU SERIES

LIGHTING SERIES

OTHER SERIES